

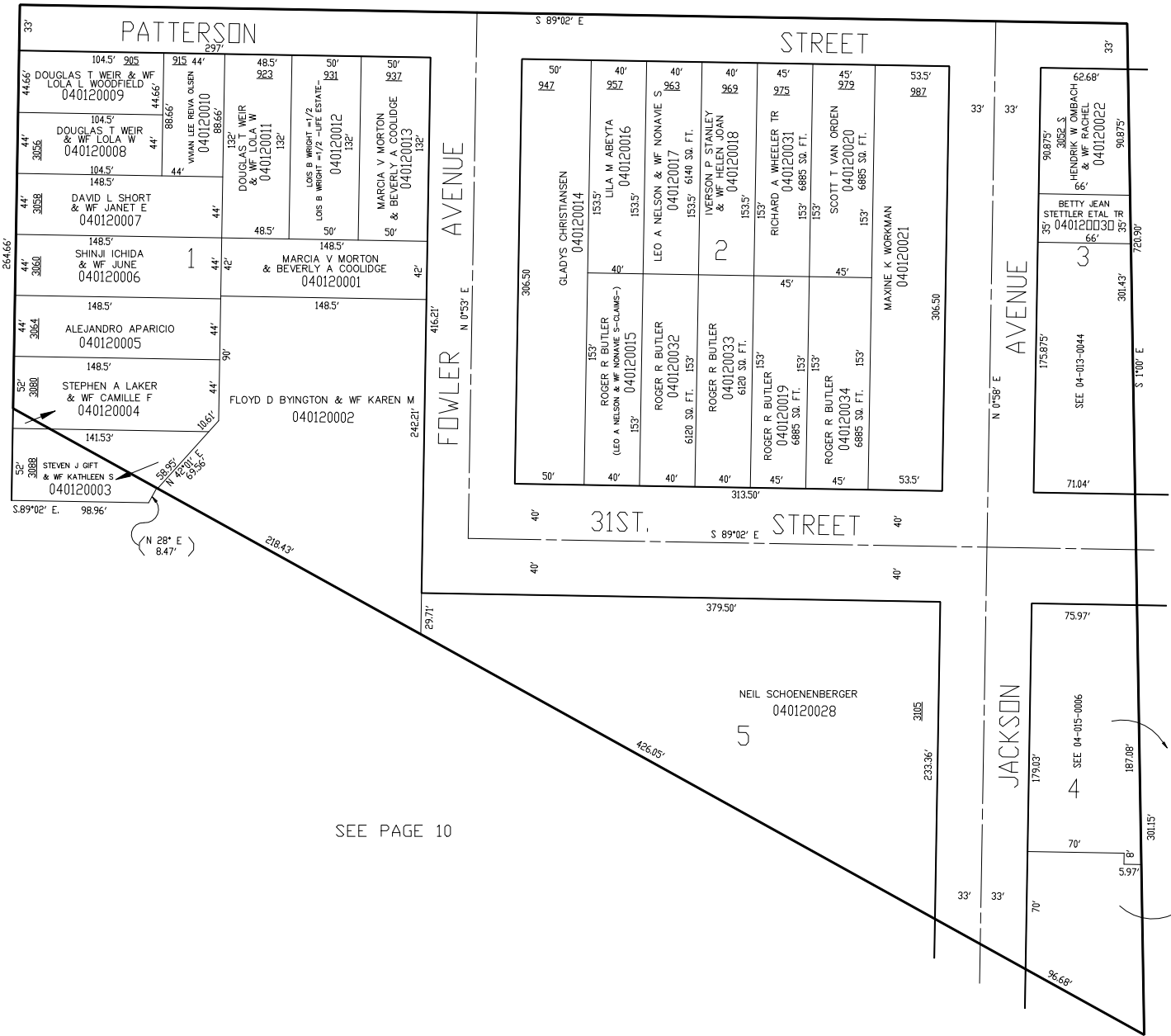
BLOCK 3, SOUTH OGDEN SURVEY
JANE BLACKBURN'S SUBDIVISION

TAXING UNIT: 25

IN OGDEN CITY
SCALE 1" = 60'

SEE BOOK 2, PAGE 1

SEE PAGE 2



SEE PAGE 15

SEE PAGE 10

FOR COMPLETE ENG DATA SEE
ORIGINAL DEDICATION PLAT IN
BOOK 8, PAGE 55 OF RECORDS.